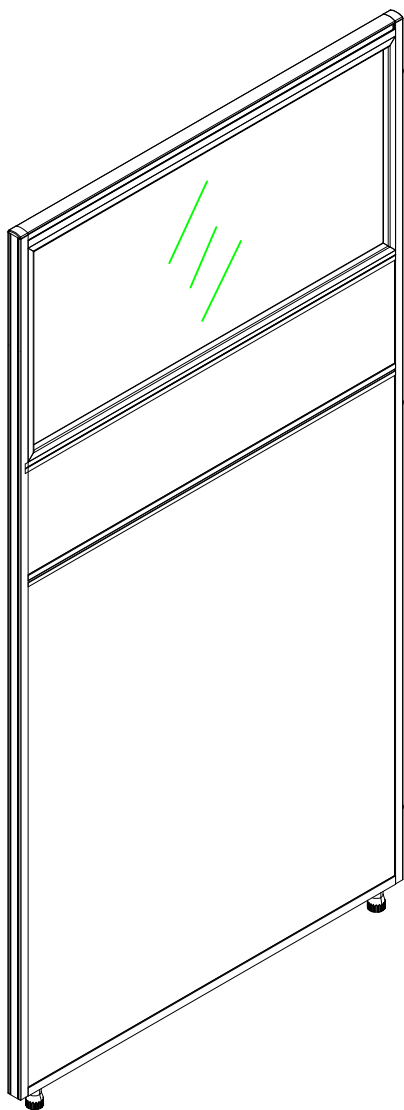


## C20 GUIDING BOOK





MENU of C20 PANEL

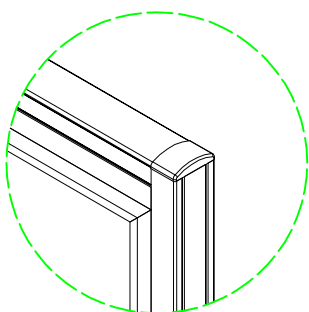
1.design character	1
2.Structure	2
3.Connections	4
4.Supportings accessories	5
5.Components list	6
6.Segments details	7
7.Cut length logic	8
8.Holes punching	10

### I.C20 details:

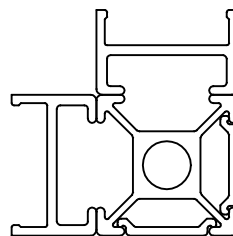
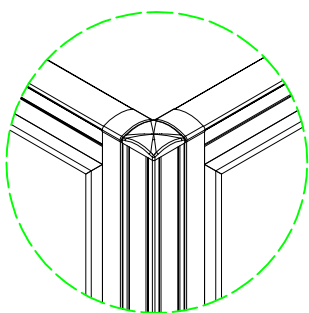
1.Aluminum frame,block system partition

2.C20 thickness:20mm

### II.END TRIM:



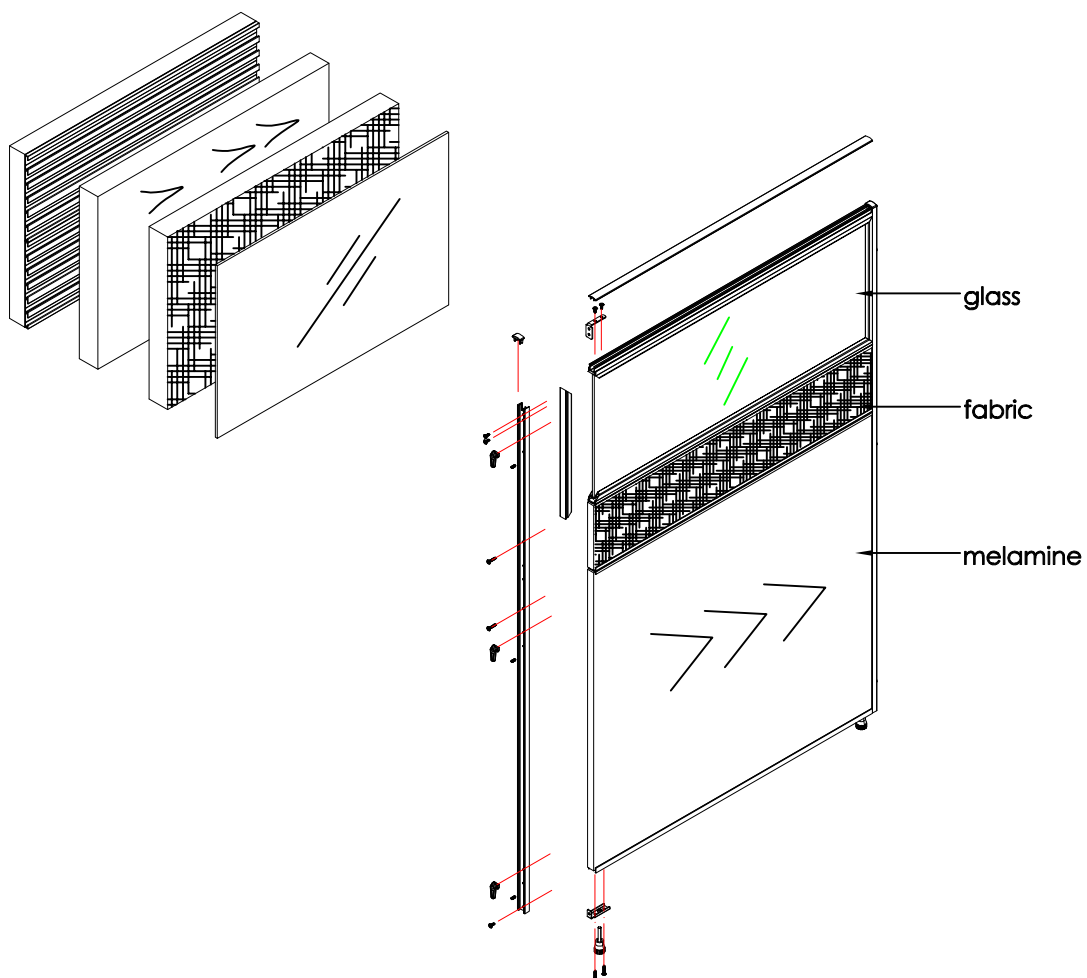
### III.Corner connections:



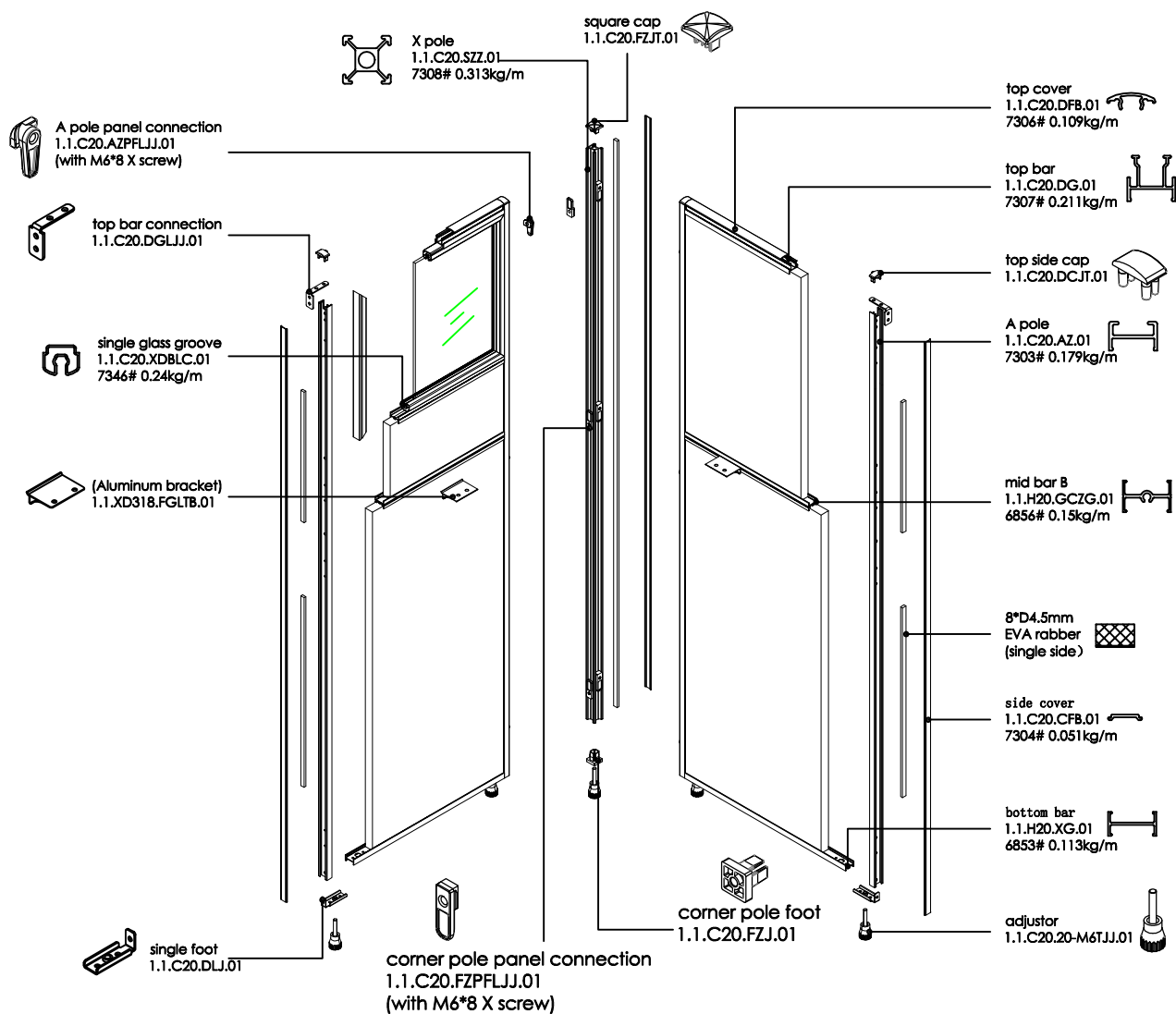
### I.C20 Structure details:

1. Panel-base system, aluminum frame includes powder coated and anodized.

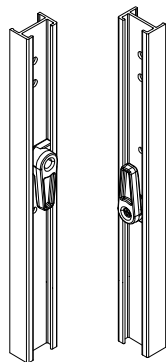
2. Block material: (4mm) glass/polycarbonate, melamine, fabric, metal sheet, white board and accessories rail.



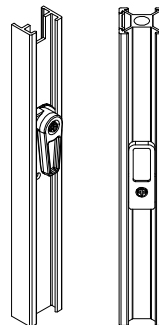
## II. Panel explosion details (take L connection for example)



## I. Between panels and poles

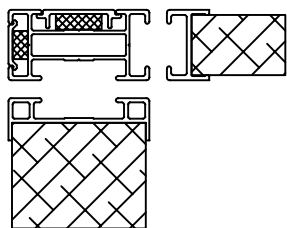


straight connection

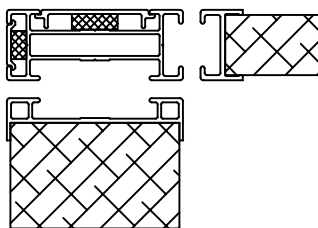


corner connection

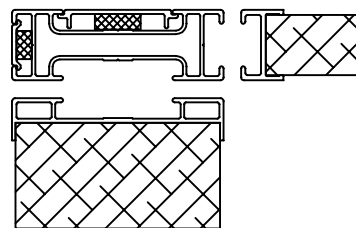
## II. Different thickness connections (take L connections for example)



C20&C40

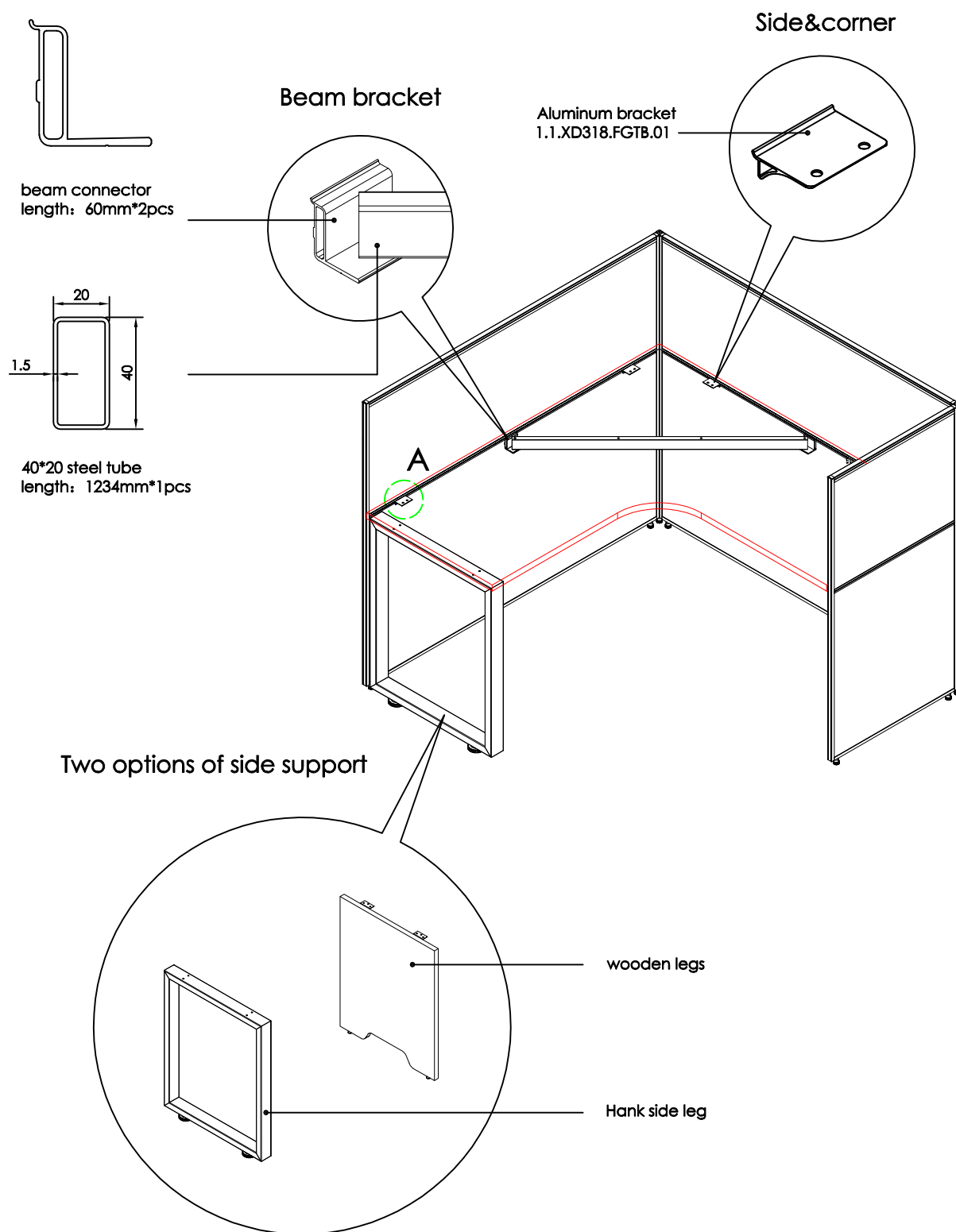


C20&C50



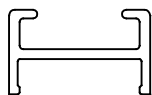
C20&C60

## Supporting system

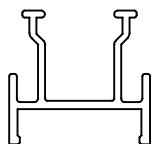


## C20 Components list

### Aluminum profiles parts



A pole  
1.1.C20.AZ.01  
7303# 0.179kg/m



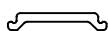
top bar  
1.1.C20.DG.01  
7307# 0.211kg/m



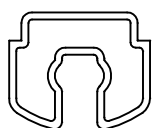
top cover  
1.1.C20.DFB.01  
7306# 0.109kg/m



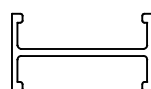
Top Cover Power Coating  
1.1.C20.DFBPF.01  
7411# 0.11kg/m



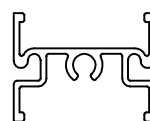
side cover  
1.1.C20.CFB.01  
7304# 0.051kg/m



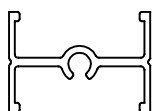
single glass groove  
1.1.C20.XDBLC.01  
7346# 0.24kg/m



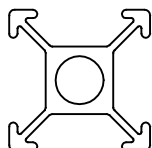
bottom bar  
1.1.C20.XG.01  
6853# 0.113kg/m



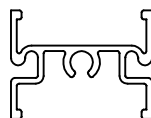
mid bar A  
1.1.H20.ZG.01  
6855# 0.177kg/m



mid bar B  
1.1.H20.GCZG.01  
6856# 0.15kg/m



corner pole  
1.1.C20.SZZ.01  
7308# 0.313kg/m



mid bar A  
1.1.H20.ZG.01  
6855# 0.177kg/m

### II.Accessories parts



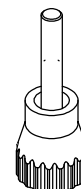
top side cap  
1.1.C20.DCJT.01



corner pole cap  
1.1.C20.FZJT.01



corner pole foot  
1.1.C20.FZJ.01



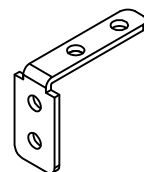
adjustor  
1.1.C20.20-M6TJJ.01



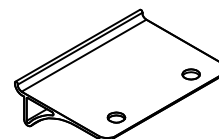
corner pole panel connector  
1.1.C20.FZPFLJJ.01  
(with M6\*8 X screw)



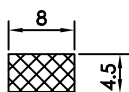
A pole panel connector  
1.1.C20.AZPFLJJ.01  
(with M6\*8 X screw)



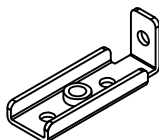
top bar connector  
1.1.C20.DGLJJ.01



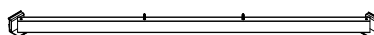
Aluminum bracket  
1.1.XD318.FGLTB.01



8\*D4.5mm EAV  
rubber(single side)



single foot  
1.1.C20.DLJ.01

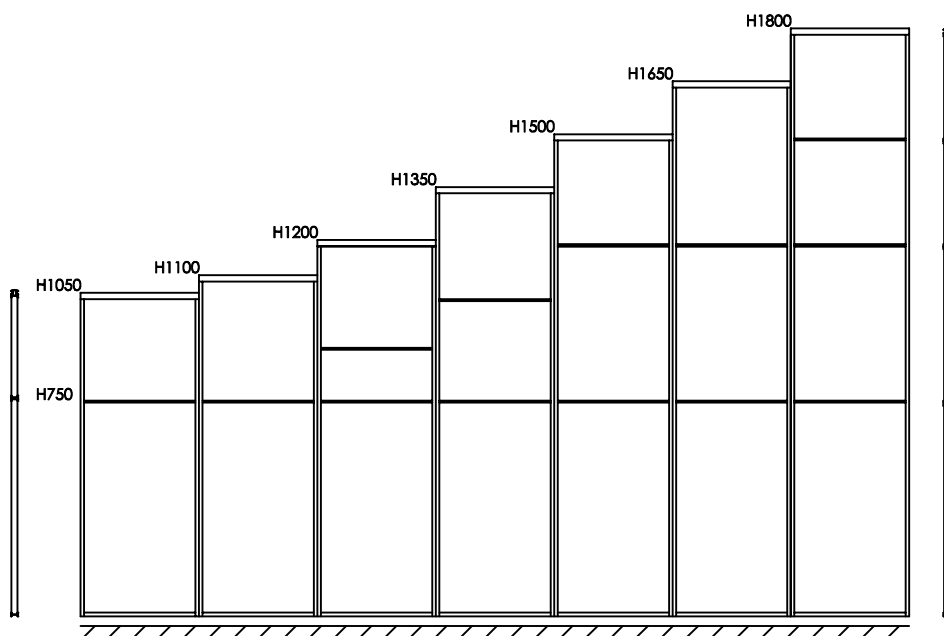


BEAM BRACKET  
1.1.C32.HGTBTJ.01



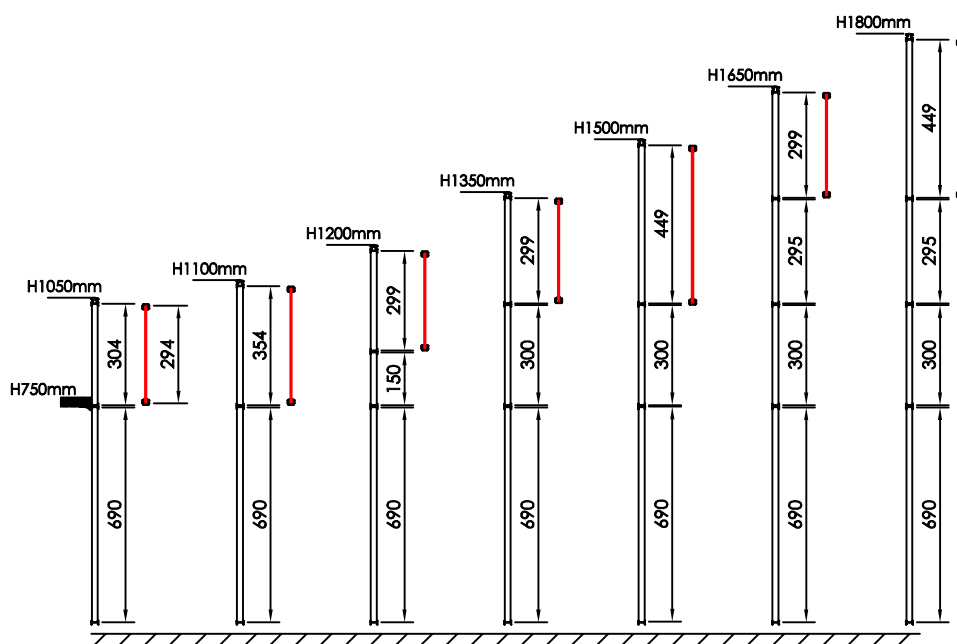
## C20 Segments details

### C20 without cable segments



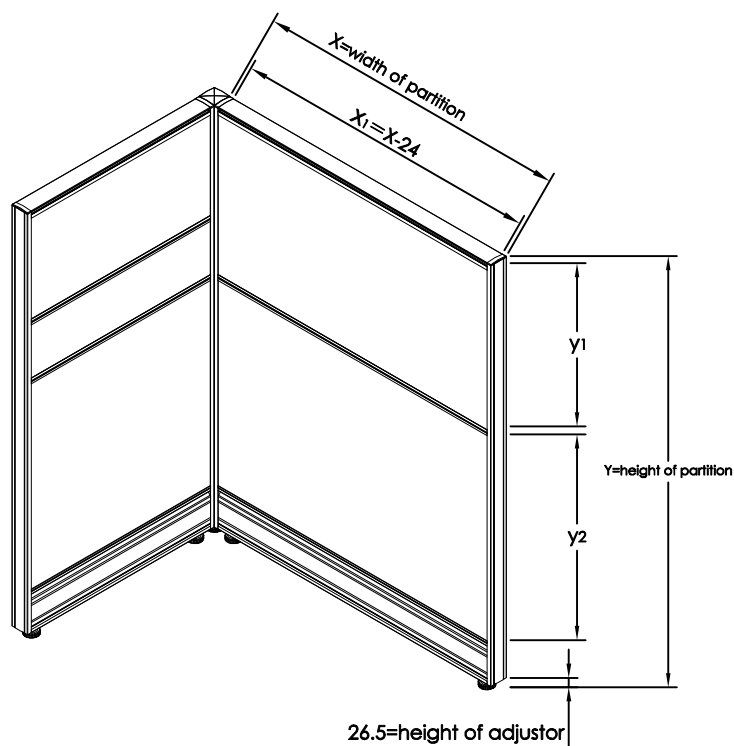
H: 1050、1100、1200、1350、1500、1650 and 1800mm.

W: 450、500、600、750、800、900、1050、1200、1400、1500 and 1600mm.


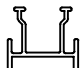
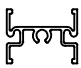

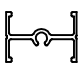



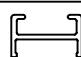
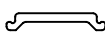


## Cut length logics

### I.Formula(C20)

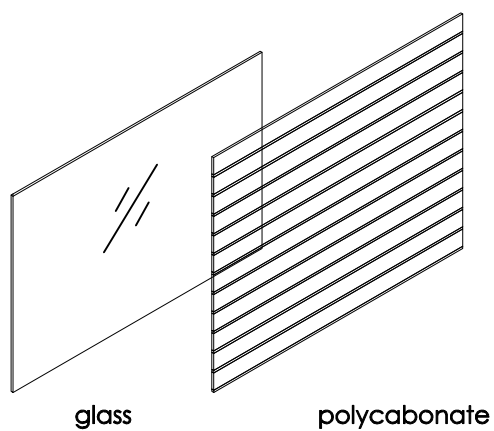
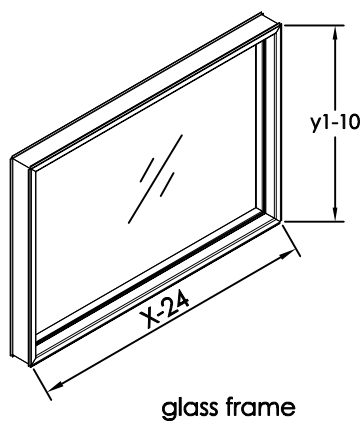
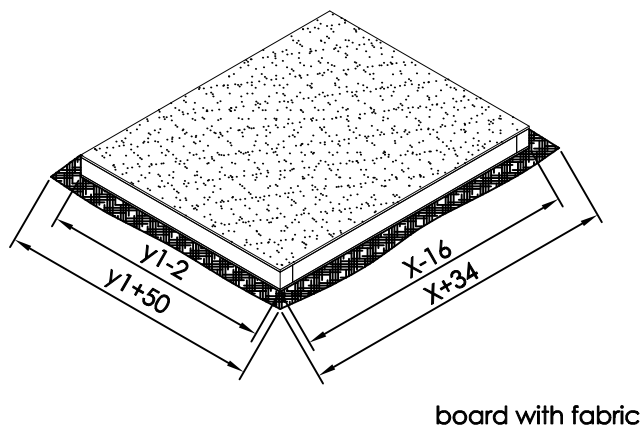
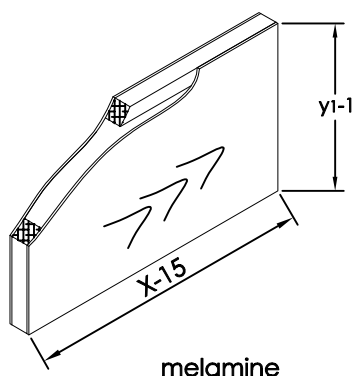


unit: mm

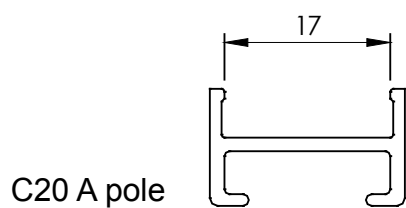
Name	Code	Size	Diagram
top cover	1.1.C20.DFB.01	X-24	
top bar	1.1.C20.DG.01	X-24	
mid bar A	1.1.C20.FGZG.01	X-24	
bottom bar	1.1.H20.XG.01	X-24	
mid bar B	1.1.H20.GCZG.01	X-24	
Top Cover Power Coating	1.1.C20.DFBPF.01	X-24	

Name	Code	Size	Diagram
A pole	1.1.C20.AZ.01	Y-31	
side cover	1.1.C20.CFB.01	Y-31	
corner pole	1.1.C20.SZZ.01	Y-31	
single glass groove	1.1.C20.XDBLC.01	Y1-10	

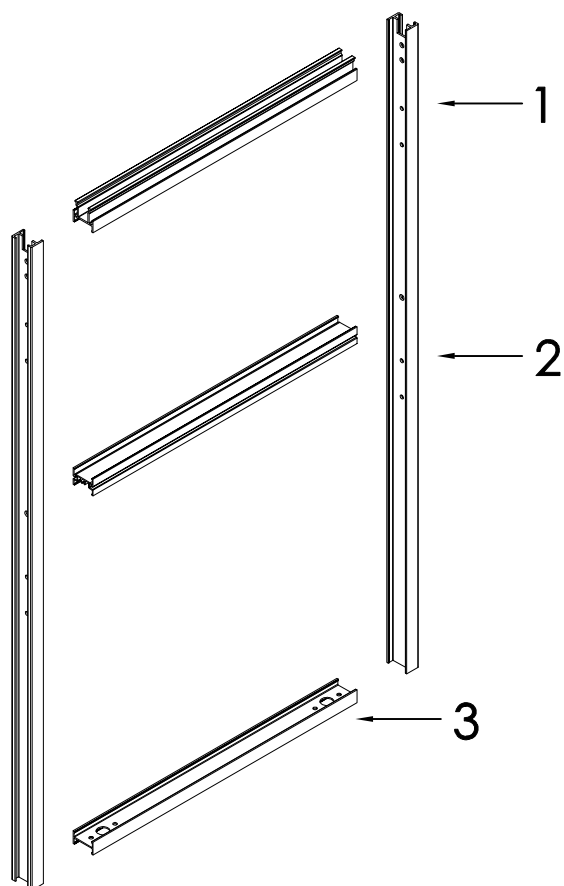
## II. Formula



## III. Block thickness C20=17mm

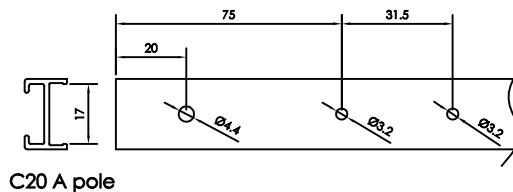
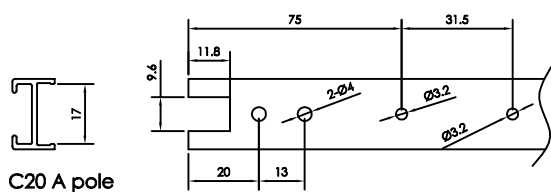


## Holes punching



1:Mould for hole connected top bar on A pole

2:Mould for hole connected panel on A pole



3:Mould for holes of adjustor on bottom bar

